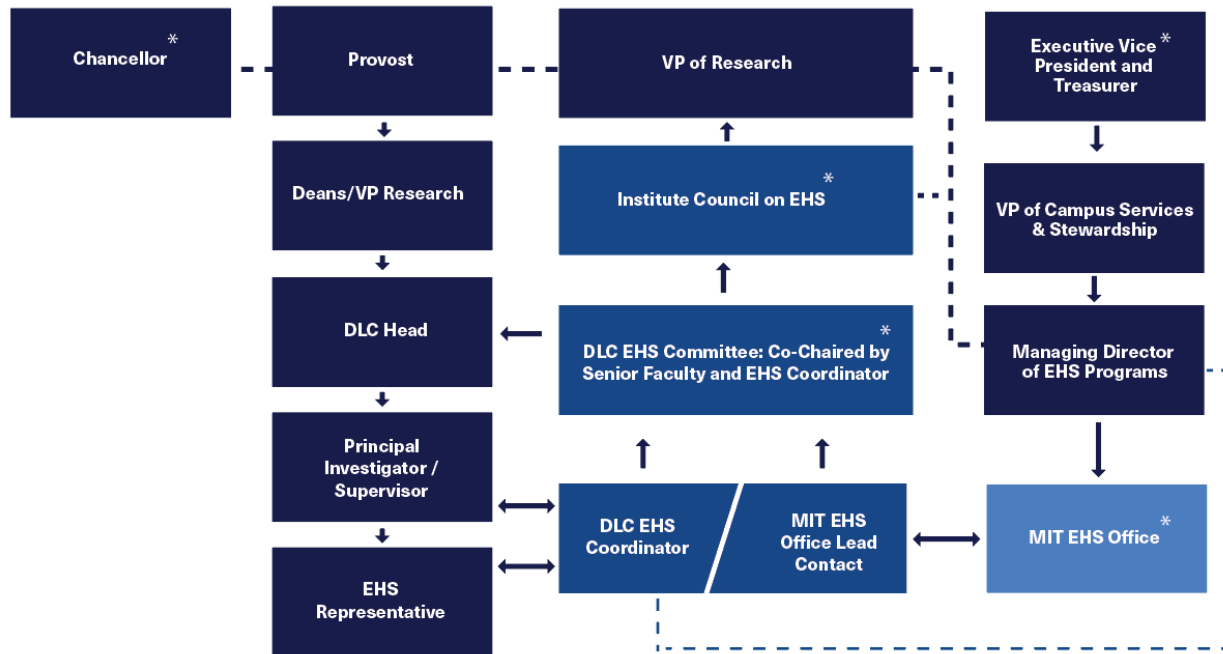


EHS-MS Governance Framework

For details about the EHS Management System (EHS-MS) see the [EHS-MS Manual](#).

Updated: February, 2021



*Below are the committees, DLCs, programs, and/or EHS roles that comprise the entities listed above.

<p>Institute Council On EHS</p> <p>Members are the chairs/heads of these Institute Committees and Administrative Units:</p> <ul style="list-style-type: none"> Department of Facilities Environment, Health and Safety Animal Care Assesment of Biohazard amd Human Embryonic Stem Cell Research Oversight Radiation Protection Reactor Safeguard Toxic Chemicals Use of Humans as Experimental Subjects 	<p>Executive Vice President and Treasurer</p> <ul style="list-style-type: none"> Facilities Finance Procurement Human Resources Police Sustainability Information Services Medical <p>DLC EHS Committee</p> <ul style="list-style-type: none"> Senior Faculty Chair EHS Coordinator - co-chair EHS Office Lead Contact DLC Faculty/ Researchers 	<p>MIT EHS Office</p> <ul style="list-style-type: none"> Environmental Management Radiation Biosafety Industrial Hygiene Occupational & Construction Safety <p>Chancellor</p> <ul style="list-style-type: none"> Athletics Campus Activities Complex Division of Student Life Housing Dining Endicott House
---	---	--