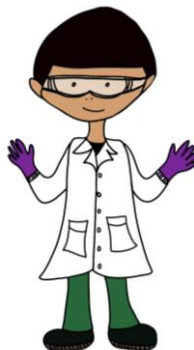


**Required when working with or nearby to hazardous chemicals, BL2 or higher biological materials, and open sources of radiation.**



## Recommended Features

- Clean + fits well
- Snap closures
- Appropriate material for hazard(s)
- Tight cuffs

## Choose the right lab coat

### Standard

#### Polyester/Cotton



Low-risk lab work with chemicals, biologicals, and radioisotopes.

### Flame Resistant (FR) Materials

#### FR-Cotton



Cotton with a flame-resistant treatment.

#### Nomex



Inherently flame-resistant.

#### FR-Chemical Protective



FR coats with added resistance to many chemicals, particularly corrosives.

*FR required when handling pyrophorics outside a glove box. Confirm your coat is FR by checking the label.*

## What you should do

- New work? Assess to determine PPE & other controls.
- Proper fit to cover your skin.
- Replace damaged or soiled lab coats with new or cleaned ones.
- *Never take lab coats home!*



Contact your DLC EHS Coordinator with questions and for DLC-specific requirements.

*For more information on lab coat selection, use, supply, and laundry, go to <https://labcoats.mit.edu>.*

