

Wear appropriate clothing, based on activity, when in the laboratory.

Combination of clothing and shoes must fully cover legs/feet when working in areas with hazardous chemicals.

Minimum Requirements

Visitor



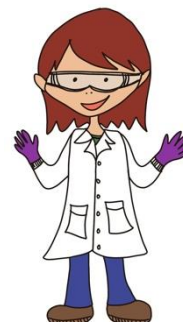
Close-toed shoes

Occupant



Legs + feet covered

Working Near Hazards



Hazard-based PPE

Details on these categories can be found at <https://ehs.mit.edu/>.

Choose the Right Clothes and Shoes

Choose clothes and shoes based on potential risks.



No shoes with open toes or open heels.

Avoid porous shoes, thin or tight leg coverings, and cuffed or rolled-up pants if there is a significant spill hazard.



Avoid synthetic materials (ex. spandex, nylon, polyester) where there is a significant fire hazard.

Always wear appropriate PPE.

What You Should Do

- Plan shoes and clothing based on activity.
- Keep spare clothes/shoes on campus for unplanned activities and emergency use.
- Wear PPE to protect you and your clothes.



Contact your DLC EHS Coordinator with questions and for DLC-specific requirements.

For more information, search for PPE at <https://ehs.mit.edu/>.

